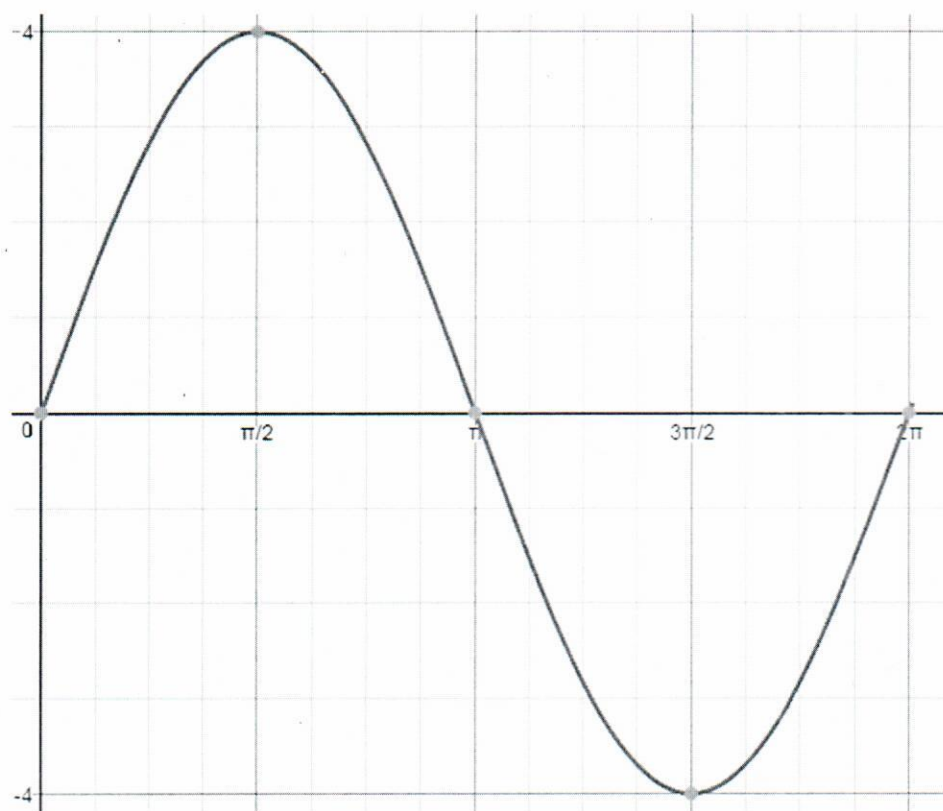
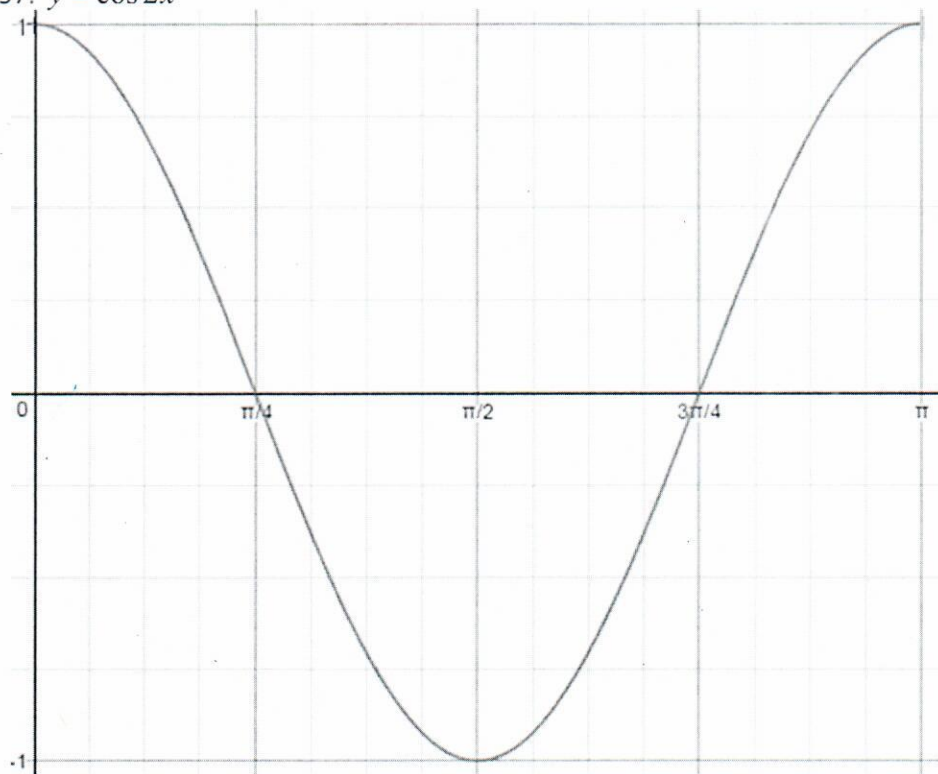


Math 29- Trigonometry Review Answers – Problems 56-67

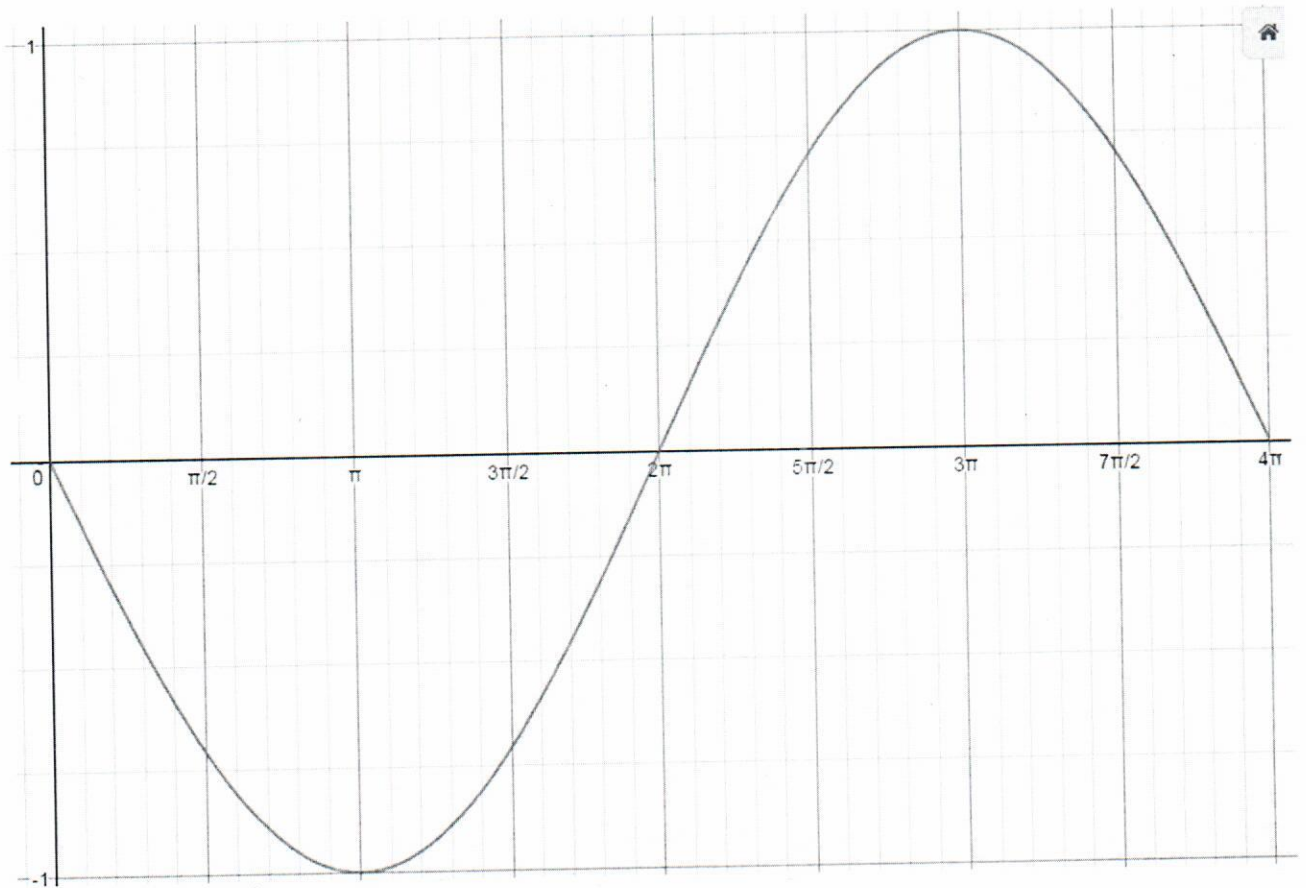
56. $y = 4\sin x$



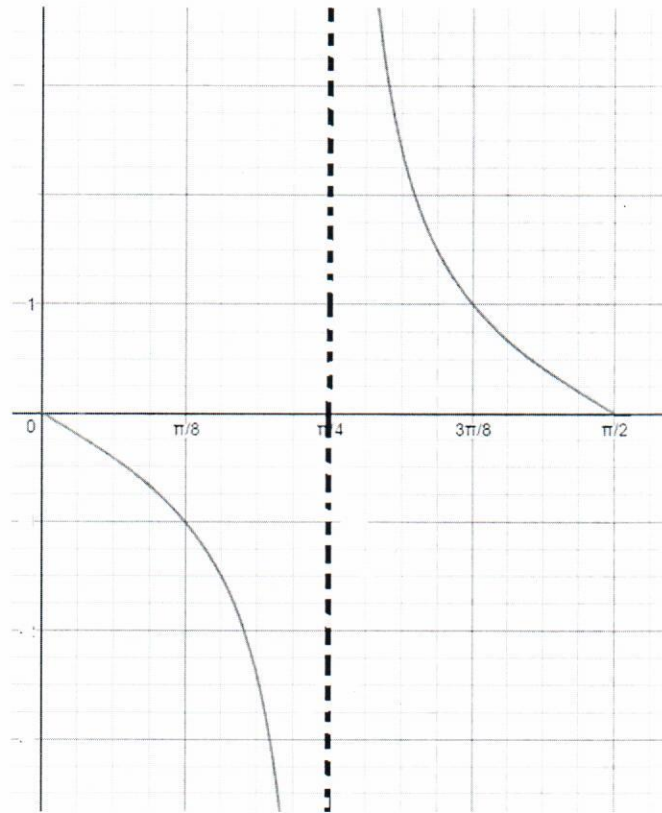
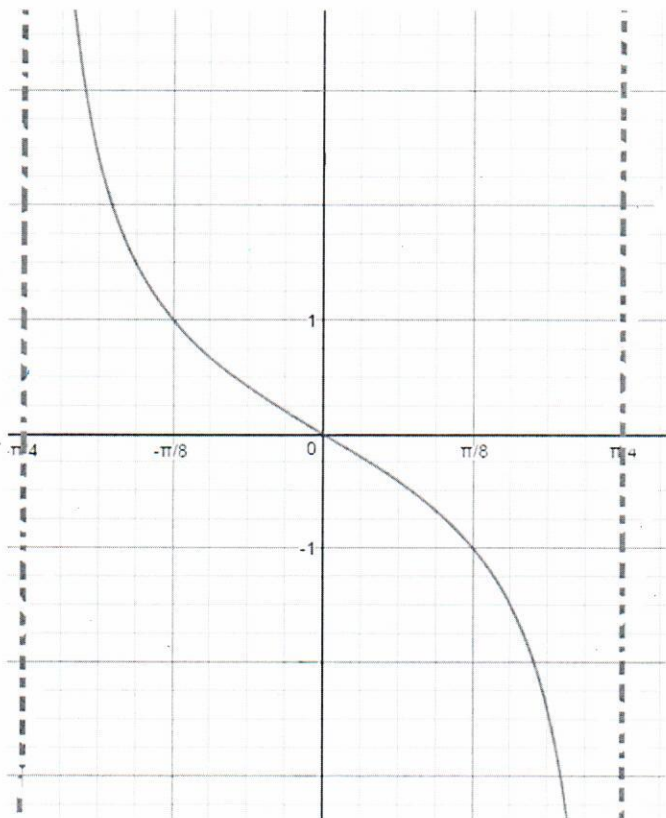
57. $y = \cos 2x$



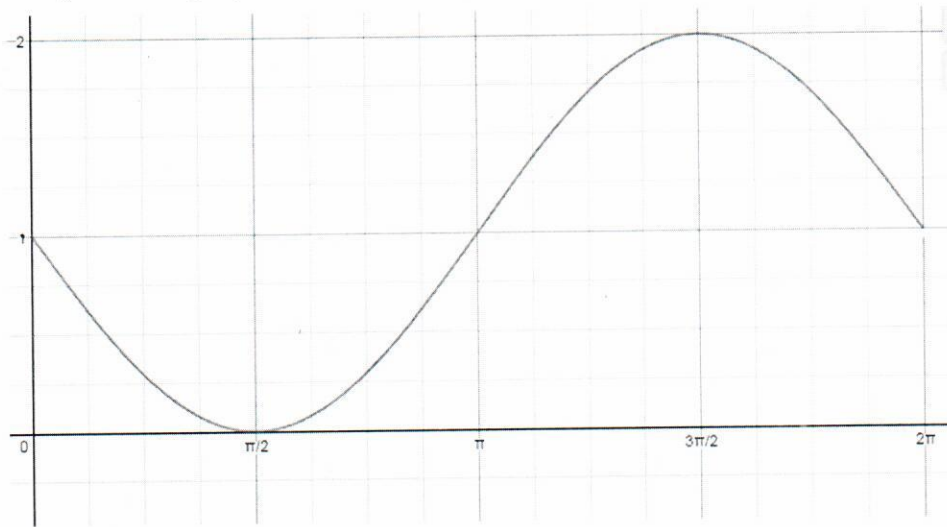
58. $y = -\sin \frac{1}{2}x$



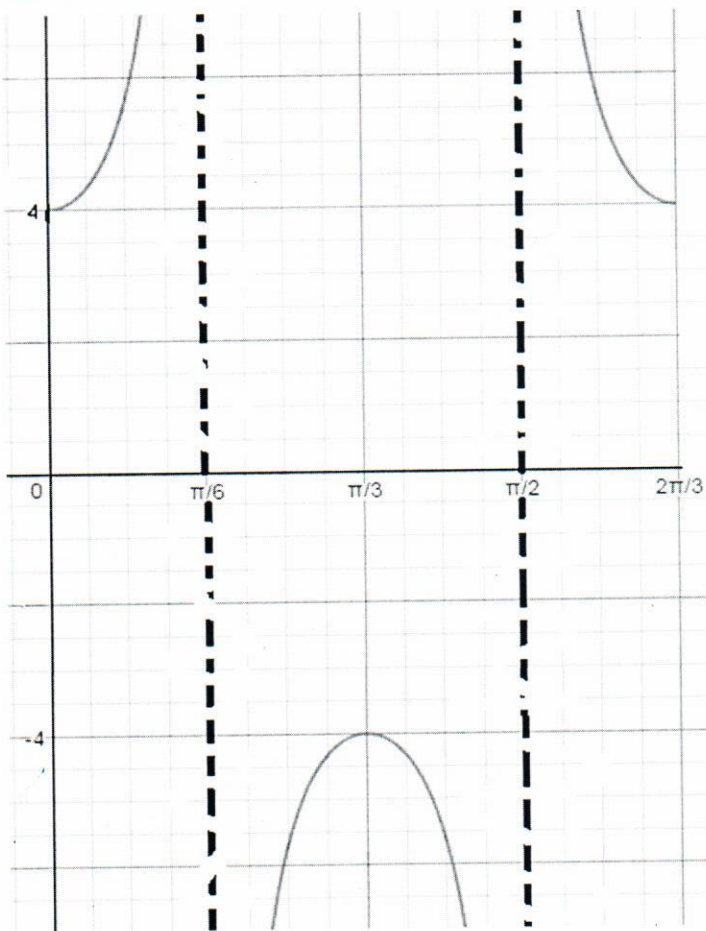
59. $y = \tan(-2x)$



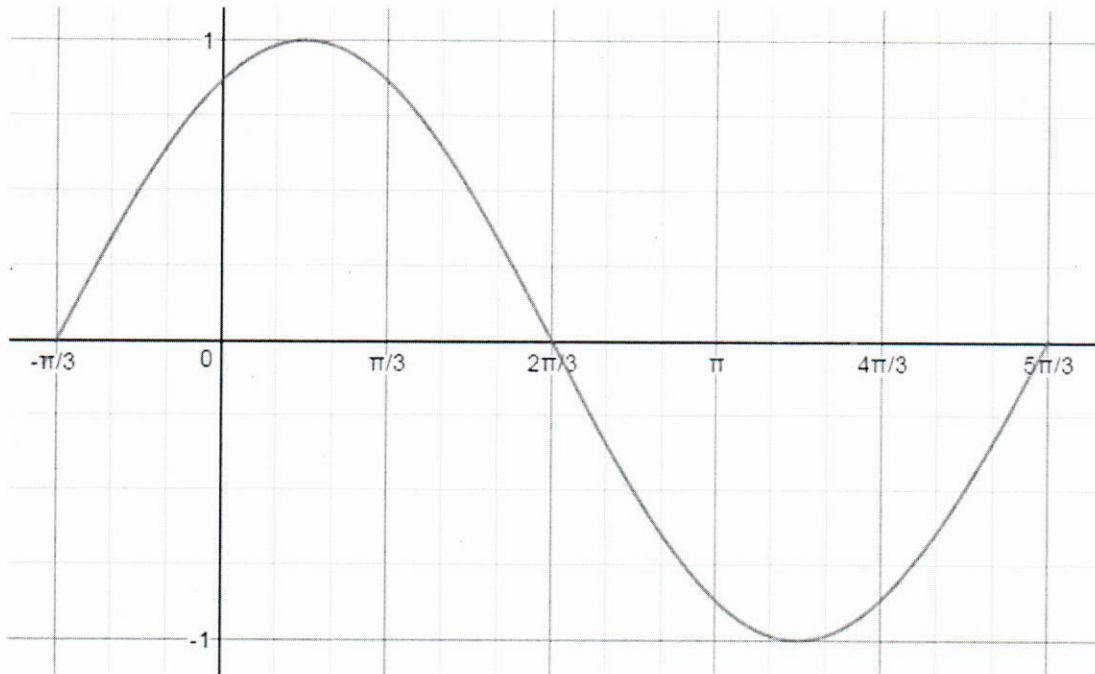
60. $y = 1 + \sin(-x)$



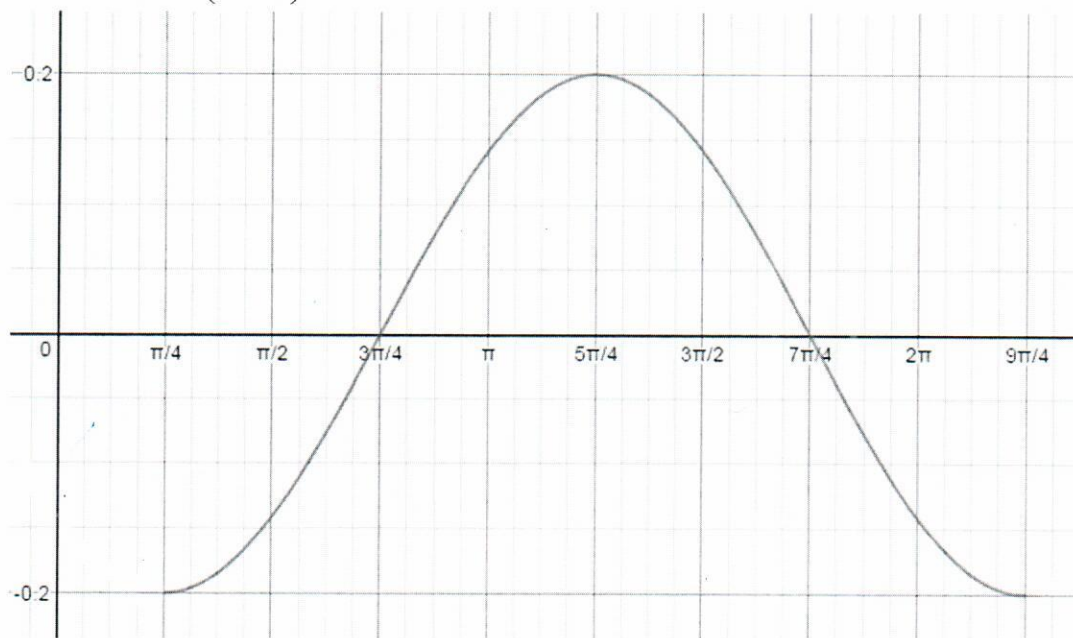
61. $y = 4 \sec(-3x)$



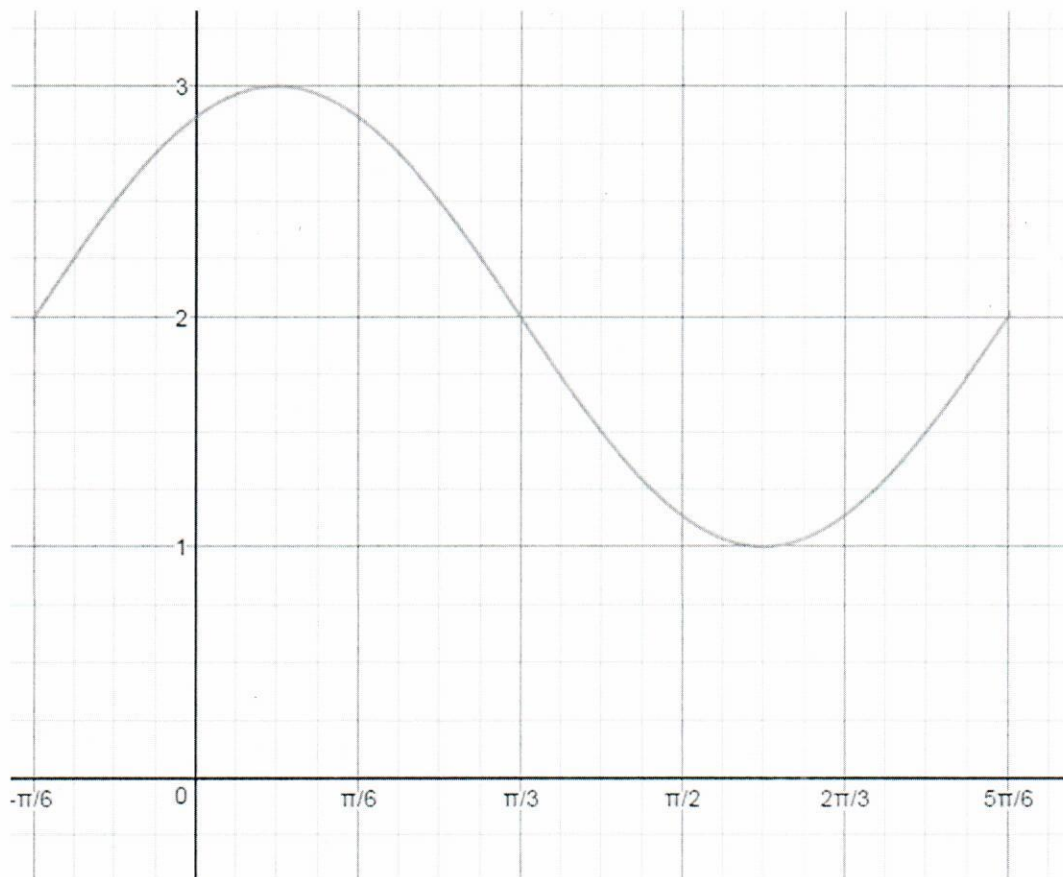
62. $y = \sin\left(x + \frac{\pi}{3}\right)$



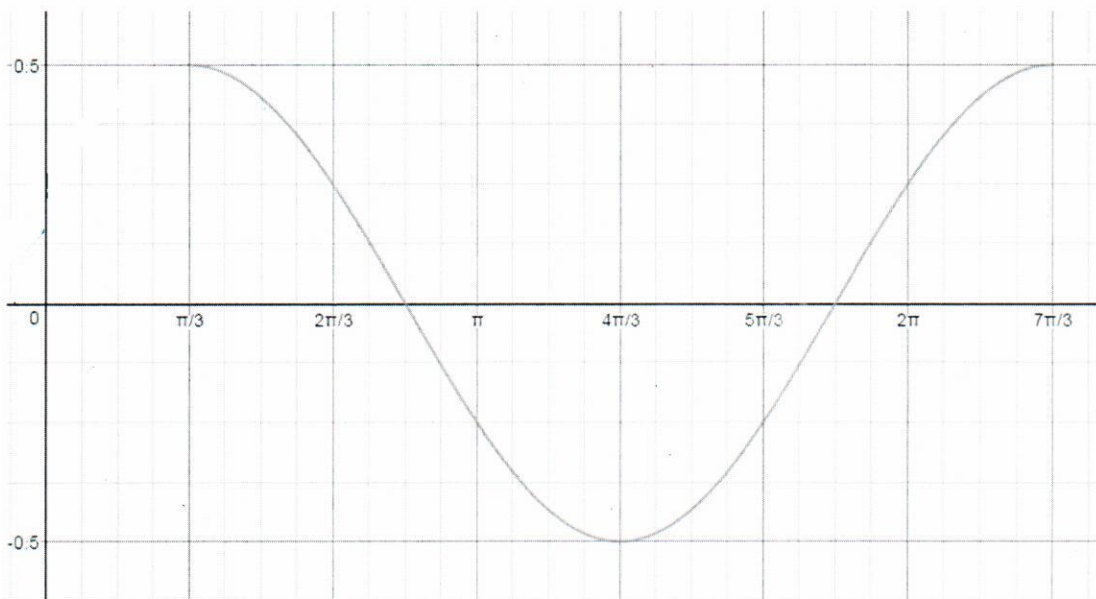
63. $y = -\frac{1}{5} \cos\left(x - \frac{\pi}{4}\right)$



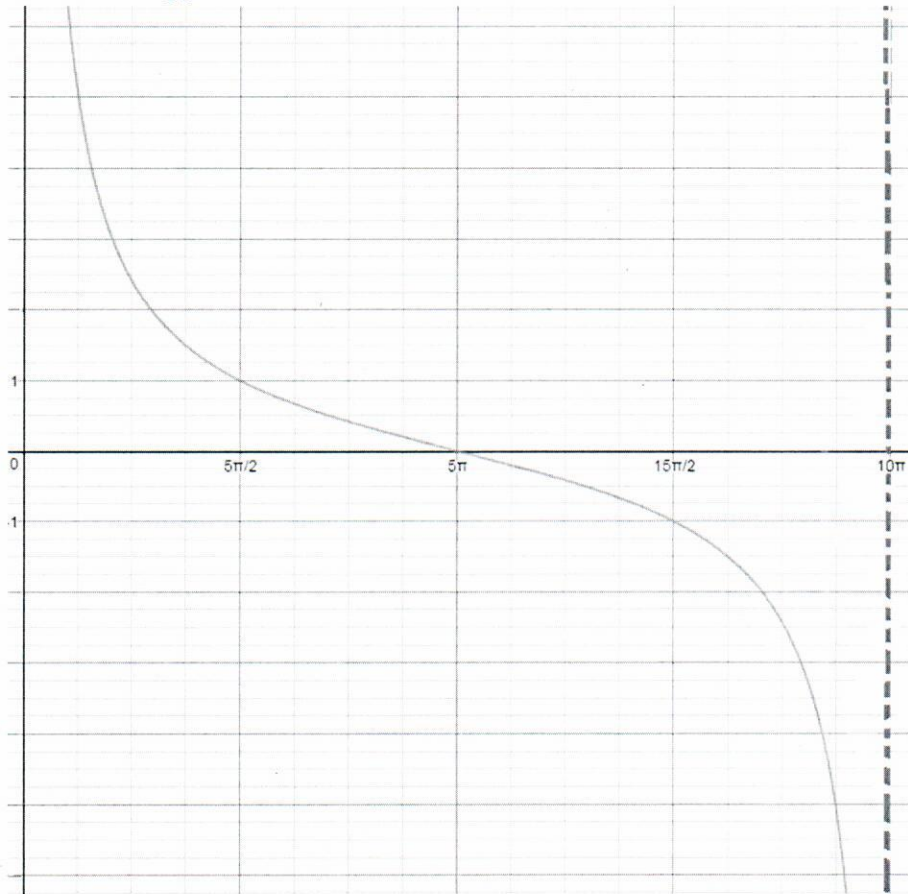
64. $y = 2 + \sin\left(2x + \frac{\pi}{3}\right)$



65. $y = \frac{1}{2} \cos\left(x - \frac{\pi}{3}\right)$



66. $y = \cot \frac{x}{10}$



67. $y = 25 \csc \left(\pi x - \frac{\pi}{6} \right)$

